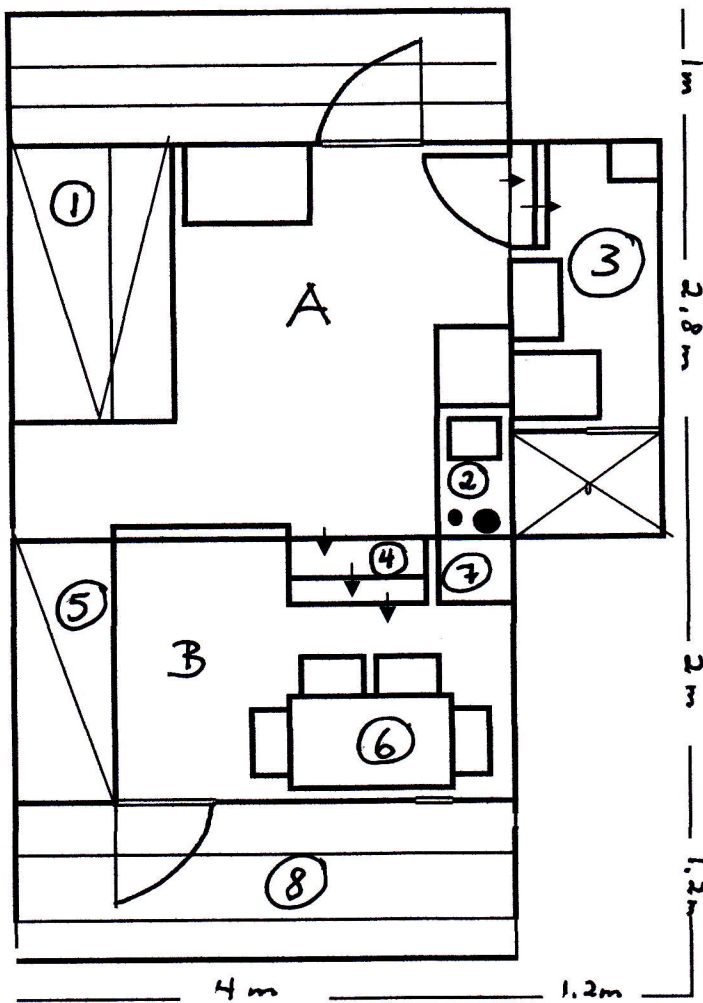


1-ROMS HYTTE, 25 M2



- PLAN A: 1) FAMILIEETASJESENG
2) MINIKJØKKEN
3) BAD - 2 TRAPPETRINN NED
4) 3 TRAPPETRINN - 50 CM TOTALT

- PLAN B: 5) DOBBEL SOVESOFA, UTTREKK
6) SPISEPLASS
7) TV
8) VERANDA / UTSIKT